

ULTRATREX AT300 / AT300PS

UltraTrex
AMPHIBIOUS EXCAVATOR



CER NO : TUV 100-01-2043
ISO 9001 : 2015



UTX, YOUR TRUSTED PARTNER IN DREDGING & ENVIRONMENTAL CONTROL SOLUTIONS

INTRODUCTION

The Ultratrex Amphibious Excavator is designed to travel and operate safely and efficiently on soft terrain such as swamps, wetlands, and shallow waters. Its well-engineered amphibious hydraulic undercarriage provides ultra-low ground pressure and exceptional mobility, making it ideal for soft terrain and swamp applications. We manufacture amphibious hydraulic undercarriages for excavators ranging from 15 to 50 tons.

FEATURES

TRACK PLATES

- Made from Ultra High Molecular Weight Polyethylene (UHMWPE)
- High strength and quality material
- 10000 hours warranty

GEAR RACK SPUD

- High precision gear rack teeth and pitch
- Robust design for enhanced stabilization when digging in deeper water

TENSIONER SYSTEM

- Easier chain tensioning method only need to tighten or loosen the bolt to set the track tension
- Withstanding heavy loads during operation

AMPHIBIOUS UNDERCARRIAGE CONSTRUCTION

- Anti corrosion plate (SMA 490)
- 3 independent water compartments
- Reinforce bottom area

AMPHIBIOUS UNDERCARRIAGE HYDROSTATIC DRIVE

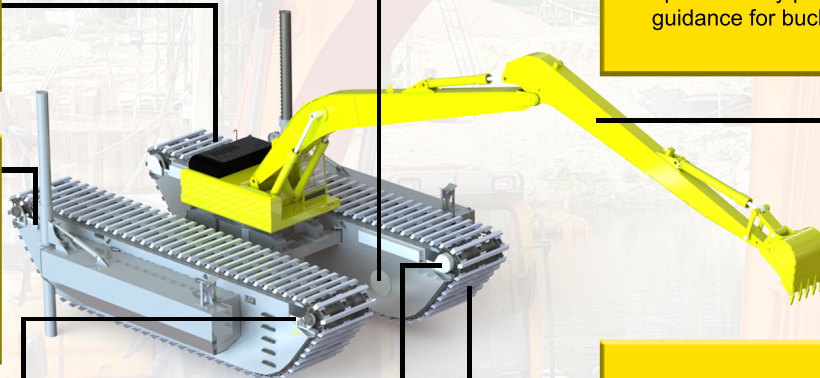
- Brand: Bonfiglioli
- Origin: Italy
- Integrated hydraulic 2-speed motors
- Output torque: 3670 kgfm

OPTIONAL FEATURES

- XTILT (Tilting Safety Sensor)
- Designed to enhance excavator operations by providing real-time guidance for bucket positioning

TRACK CHAINS

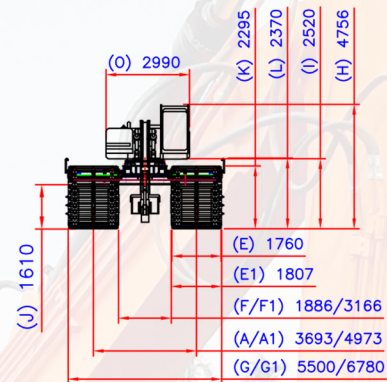
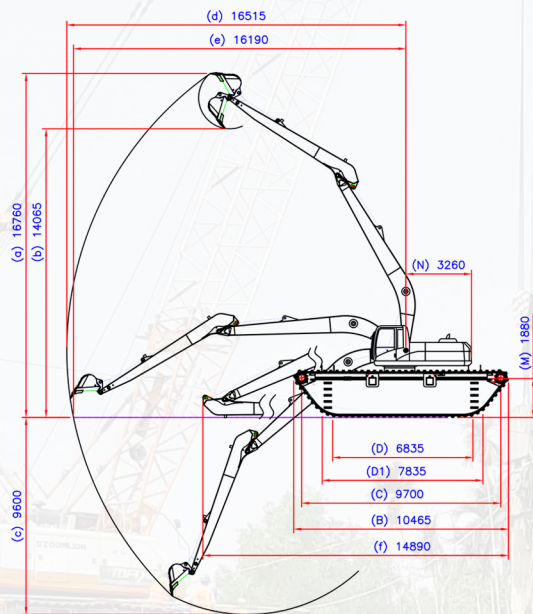
- Triple strands
- Track chain pitch : 152.4 mm
- Running on 10mm Hardox AR400 wear plate



APPLICATIONS

- Swamp land clearing for mining, plantations and forest areas
- Deepening of canals, river channels and river mouths
- Building bunds for flood prevention and land reclamation
- Sludge removal from lakes, ponds and water reservoirs
- Digging trenches for oil and gas pipeline installations
- Transporting and clearing landslides and flood hit areas
- Swamp and wetland construction
- Road construction through wetlands

AT300 TECHNICAL SPECIFICATIONS



GENERAL SPECIFICATIONS

Base Machine	30 - 36 Ton Excavator	
Total Weight	Without Side Pontoon	45000 kg
Floating Capacity		60 m3
Floating Capacity/Total Weight		0.75 m3/ton
Maximum Torque Motor		3670 kgf-m
Ground Pressure		0.15 kg/cm2
Maximum Gradient	30 °	

WORK EQUIPMENT

Bucket Capacity	0.9 m3
-----------------	--------

WORKING RANGES

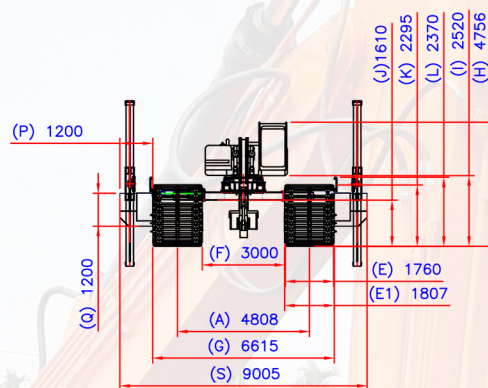
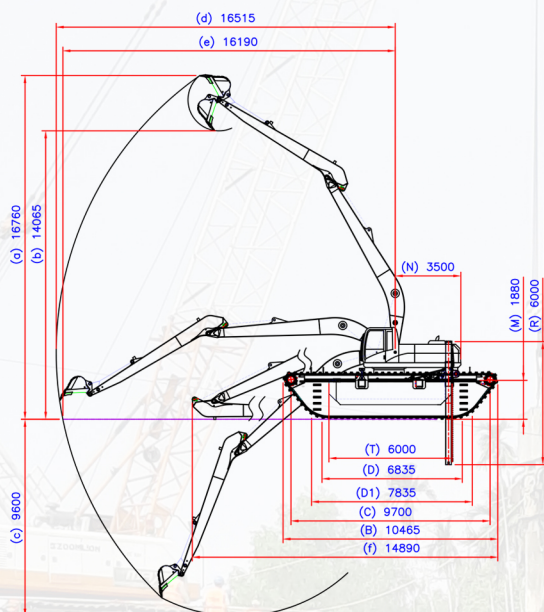
a. Maximum Digging Height	16760 mm
b. Maximum Dumping Height	14065 mm
c. Maximum Digging Depth	9600 mm
d. Maximum Digging Reach	16515 mm
e. Maximum Digging Reach On Ground	16190 mm
f. Total Length During Parking	14890 mm

*Dimension are based on a 16m Long Reach Arm and 0.9m3 General Purpose Bucket

DIMENSIONS

A. Track Gauge (Minimum)	3693 mm
A1. Track Gauge (Maximum)	4973 mm
B. Track Length	10465 mm
C. Distance Between Idler And Sprocket	9700 mm
D. Track Length On Hard Ground	6835 mm
D1. Track Length On Soft Ground	7835 mm
E. Width Track Shoe	1760 mm
E1. Width Float	1807 mm
F. Distance Between Shoe Inside (Minimum)	1886 mm
F1. Distance Between Shoe Inside (Maximum)	3166 mm
G. Overall Machine Width (Minimum)	5500 mm
G1. Overall Machine Width (Maximum)	6780 mm
H. Overall Machine Height	4756 mm
I. Ground Clearance (Counterweight)	2520 mm
J. Minimum Ground Clearance	1610 mm
K. Shoe Setting Height	2295 mm
L. Crawler Height	2370 mm
M. Water Line Level	1880 mm
N. Minimum Swing Radius	3260 mm
O. Cabin Width	2990 mm

AT300PS TECHNICAL SPECIFICATIONS



GENERAL SPECIFICATIONS

Base Machine	30 - 36 Ton Excavator	
Total Weight	Without Side Pontoon	45000 kg
Floating Capacity		60 m ³
Floating Capacity/Total Weight		0.75 m ³ /ton
Maximum Torque Motor		3670 kgf-m
Ground Pressure		0.15 kg/cm ²
Maximum Gradient	30 °	

WORK EQUIPMENT

Bucket Capacity	0.9 m ³
-----------------	--------------------

WORKING RANGES

a. Maximum Digging Height	16760 mm
b. Maximum Dumping Height	14065 mm
c. Maximum Digging Depth	9600 mm
d. Maximum Digging Reach	16515 mm
e. Maximum Digging Reach On Ground	16190 mm
f. Total Length During Parking	14890 mm

*Dimension are based on a 16m Long Reach Arm and 0.9m³ General Purpose Bucket

DIMENSIONS

A. Track Gauge	4808 mm
B. Track Length	10465 mm
C. Distance Between Idler And Sprocket	9700 mm
D. Track Length On Hard Ground	6835 mm
D1. Track Length On Soft Ground	7835 mm
E. Width Track Shoe	1760 mm
E1. Width Float	1807 mm
F. Distance Between Shoe Inside	3000 mm
G. Overall Machine Width	6615 mm
H. Overall Machine Height	4756 mm
I. Ground Clearance (Counterweight)	2520 mm
J. Minimum Ground Clearance	1610 mm
K. Shoe Setting Height	2295 mm
L. Crawler Height	2370 mm
M. Water Line Level	1880 mm
N. Minimum Swing Radius	3500 mm
O. Cabin Width	2990 mm

ADDITIONAL DIMENSIONS (SIDE PONTON)

P. Side Pontoon Width	1200 mm
Q. Side Pontoon Height	1200 mm
R. Spud Length	6000 mm
S. Overall Machine Width	9005 mm
T. Side Pontoon Length	6000 mm

ULTRATREX AT300/AT300PS

UltraTrex
AMPHIBIOUS EXCAVATOR

GALLERY



**UTX, YOUR TRUSTED PARTNER
IN DREDGING & ENVIRONMENTAL CONTROL SOLUTIONS**



CER NO : TUV 100-01-2043
ISO 9001 : 2015



For more information on Ultratrex products, dredging,
and environmental control solutions, visit our website at
www.amphibousexcavator.com

Materials and specifications are subject to change without notice.
The brochure may feature additional equipment.
Contact your Ultratrex dealer for available options.



ULTRATREX MACHINERY SDN. BHD.

PLO 229, Jalan Kencana Mas 2, Kawasan Perindustrian Tebrau 3,
81100 Johor Bahru, Johor, Malaysia

Tel : +607-355 7777

Fax : +607-351 0229

Email : marketing@ultratrex.com.my